

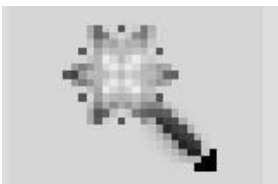
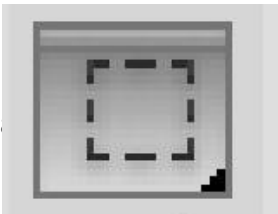
The Toolbar

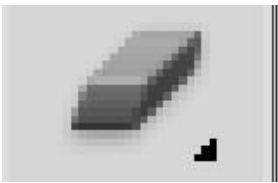
Please identify the name of each icon (mouse over and a “tool tip” will pop-up and tell you. Then identify the keyboard shortcut and provide a short description of what that tool does. For each item, please write out what that feature does – the first one is done for you:

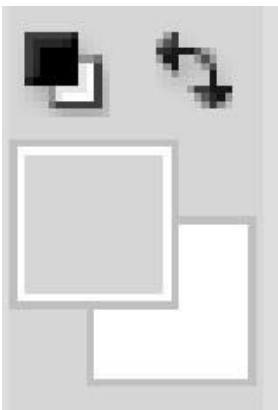
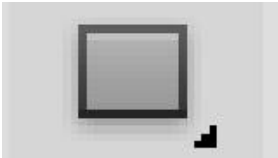
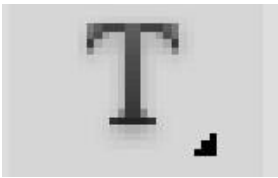


Move Tool: Keyboard Shortcut: V

The move tool simply lets you move objects in a given layer around the Photoshop canvas. To use it, click anywhere on the canvas and drag. As you drag, the Photoshop layer will move with your mouse.







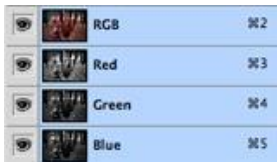
Palettes



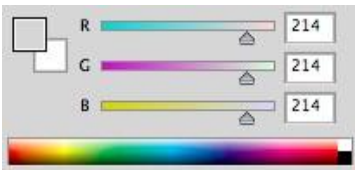
Layers



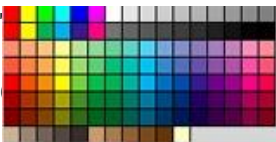
Adjustments



Color Channels



Color Picker



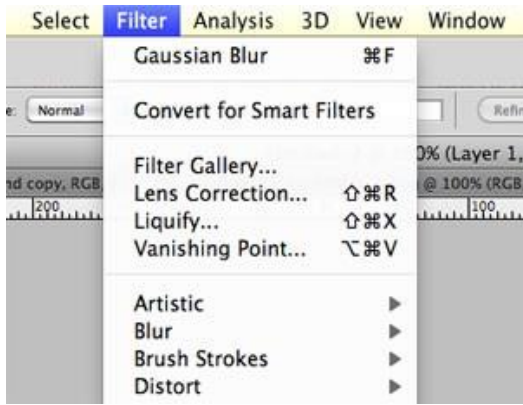
History



Text



Menus



Menus

Most of what you'll find in Photoshop's menus can be found using the previously discussed tools. Nonetheless, we're going to take a quick look at some notable items in each of the menus.

File

Edit

Image

Layer

Select

Filter

Analysis

3D

View

Window