

# Your Name's



## December's Flavor of the Day

1. Cinnamon Apple Crisp

2. German Chocolate

3. Raspberry Cream

4. Buttercup

5. Krispie Treats

6. M & M Swirl

7. Butter Pecan

8. Lemon Cream

9. Chocolate Éclair

10. Cookies 'n Cream

11. Nestles Swirl

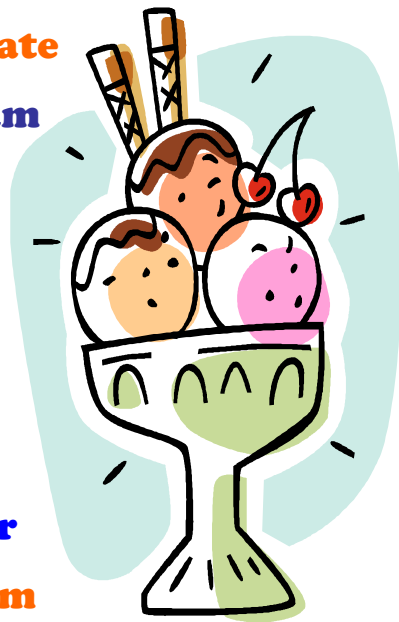
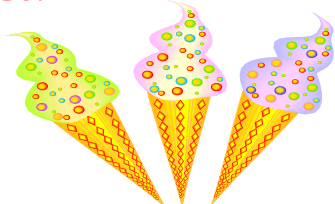
12. Very Berry

13. Cookie Dough

14. Pumpkin Pecan

15. Snicker Swirl

16. Trufflicious



17. Just Drummy

18. Strawberry Shortcake

19. Caramel Cashew

20. English Toffee

21. Fudgie Way

22. Peanut Butter Cup

23. Death by Chocolate

24. Cherry Crisp

25. Hershey Kiss Crunch

26. Peach Cobbler

27. Turtle

28. Vanilla Cappuccino

29. Toffee Sundae

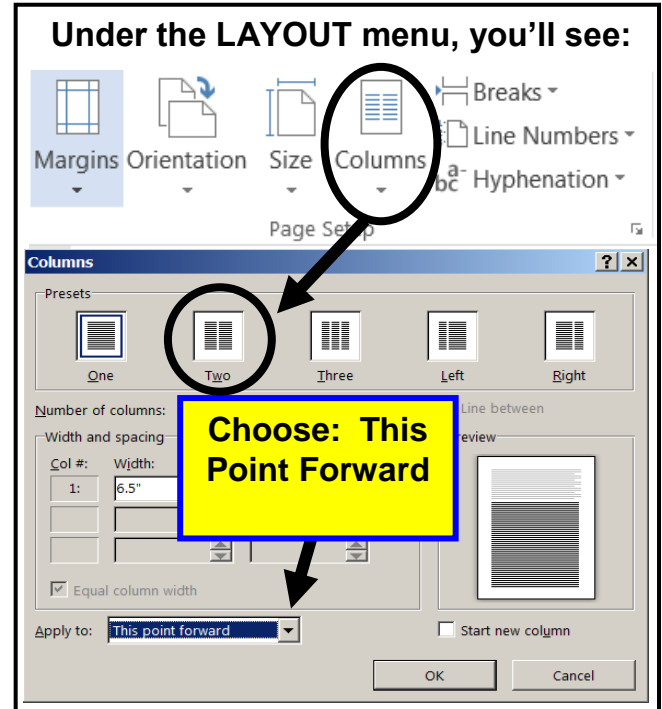
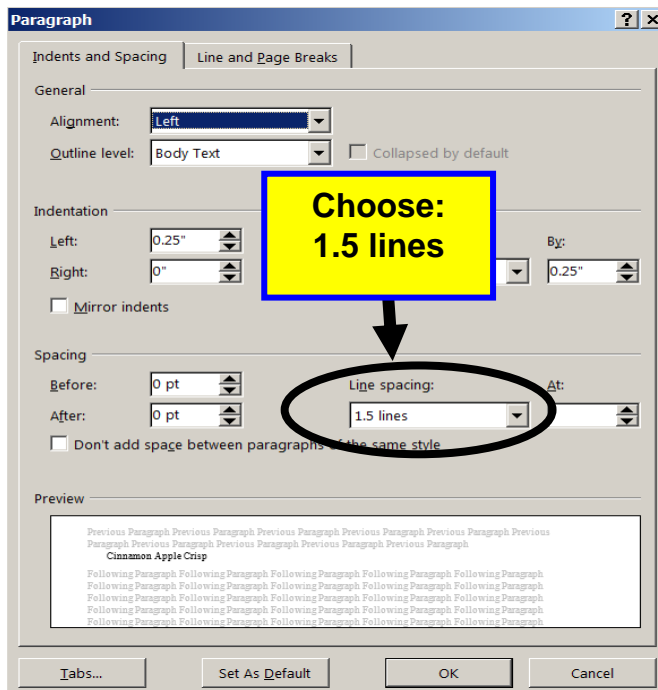
30. Rocky Road

31. Blueberry Crisp



# What's the Flavor of the Day?

1. Set the **LEFT, RIGHT, TOP, and BOTTOM** margins to **.5"**.
2. On the right, please use **WORDART** and **AUTOSHAPES** to create a logo. In the example you see, there are 2 drawn ovals. You may create your own logo – here is how the one you see was done:
  - a. For the "inside" shape of the logo, use the **DRAW** toolbar and create an oval. Use the **LINE STYLE** button to change that line size to **4 1/2 points**. Fill the Autoshape with a bright color (example is **YELLOW**) and use a dark color for the line (example is **BLUE**).
  - b. Draw a second shape around the first and change the line size to **4 1/2 points**. Be sure this one is behind the first. Fill it with coordinated color (example is **SKY BLUE**) and use a dark color for the line (example is **BLU**.)
  - c. Use **WORDART**, (example is **ARIAL BOLD** to create the curved inset, *Everyday is Sundae*. Move this text inside. Use **WORDART** with a contrasting style and font to create the inset *Frozen Custard*. Move this text below the other inset to fit snugly in the ovals.
3. Create a line of your choice to define the end of this section of the flyer. **BE SURE THAT THE TOP SECTION OF YOUR FLYER DOES NOT EXTEND PAST 3" ON THE RULER (FROM THE TOP MARGIN) OR 3 1/2" FROM THE TOP OF THE PAGE.**
4. Return twice from the line you just drew that sets-off the heading. The computer should default and give you a 1/4" HANGING INDENT.
5. Pull down the **FORMAT** menu, select the **PARAGRAPH** sub-menu, and pull down **THE LINE SPACING** selections and select **1.5 LINES**.



6. Use a font of your choice approximately the same size as the example (**COOPER BLACK**) for the custard flavors.
7. **In the first column, items 10-16, & then column 2, use the ALT key and your mouse to adjust the hanging indent to align the enumeration's period and not the number**

**Hanging Indent 1-9**



**Hanging Indent 10-16**



**Hanging Indent column 2**

